

BELIZE:

STATUTORY INSTRUMENT

No. 161 of 2003

ORDER made by the Minister of Agriculture and Fisheries in exercise of the powers conferred upon him by section 14 (1) of the Fisheries Act, Chapter 210 of the Substantive Laws of Belize, Revised Edition 2000, and all other powers thereunto him enabling.

(Gazetted 1st November, 2003.)

1. This Order may be cited as the

Short title.

FISHERIES (SPAWNING AGGREGATION SITE RESERVES) ORDER, 2003.

2. The areas specified below, and fully described in Schedule 1 to this Order are hereby declared to be Marine Reserves for the purposes of the Fisheries Act -

Declaration of Marine Reserves. Schedule 1, CAP. 210.

Rocky Point, Ambergris Caye
Dog Flea Caye, Turneffe Islands Atoll
Caye Bokel, Turneffe Islands Atoll
Sandbore, Lighthouse Reef Atoll
South Point, Lighthouse Reef Atoll
Emily or Caye Glory
Northern Glover's, Glover's Reef Atoll
Gladden Spit
Rise and Fall Bank, Sapodilla Cayes
Nicholas Caye, Sapodilla Cayes
Seal Caye, Sapodilla Cayes

Maps of the
Marine
Reserves.
Schedule 2.

3. Maps of the Reserves listed in Paragraph 2 above, are set out in Schedule 2 to this Order, and may be seen at the Office of the Fisheries Administrator, Fisheries Department, Belize City.

Protection of
fish spawning
grounds.

4. (1) The relevant areas referred to in paragraph 2 shall be closed to fishing all year round in order to protect important fish spawning grounds.

(2) The areas referred to in paragraph (1) shall be zoned as Conservation 1 (No Extraction) Zones. Areas listed above in paragraph (2) that are wholly or partially in marine reserves, but not included within any seasonal closure or conservation zone, may be used for limited fishing by traditional users who are designated by, and to the extent recommended by, the co-managers of the respective marine reserve. Fishermen and the type and quantity of fishing so designated shall be approved by the Fisheries Administrator, who shall grant Special Licenses accordingly.


(3) Details of all catches made in these areas shall be submitted to the Fisheries Administrator as prescribed by the terms of the license issued.

(4) Licenses shall be reviewed on an annual basis, and shall be cancelled for non-compliance or if monitoring results determine that no fishing shall be allowed.

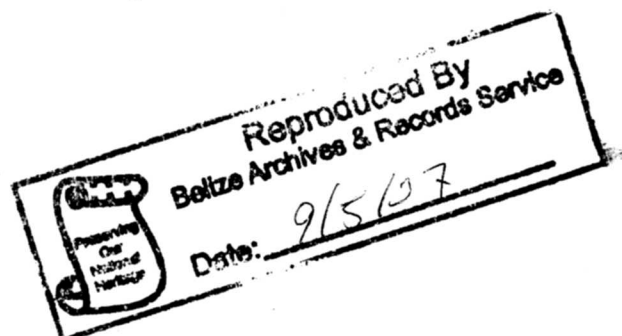
Commencement.

5. This Order shall come into force on the 21st day of October, 2003.

MADE by the Minister of Agriculture, Fisheries and Co-operatives this 21 day of October, 2003.


(SERVULO BAEZA)
Minister of Agriculture,
and Fisheries

Printed in Belize by the Government Printer



SCHEDULE 1

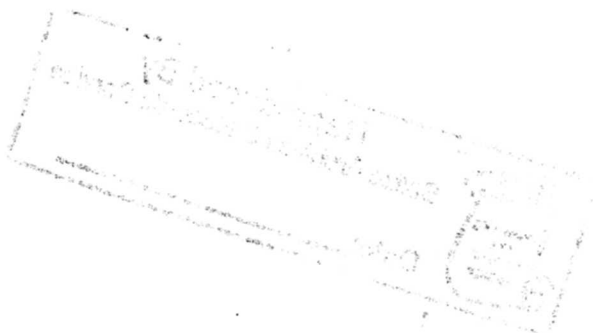
SPAWNING AGGREGATION SITE RESERVES

ALL THAT PORTION of the Caribbean Sea, reefs and cayes zoned as Conservation Zone 1 and more fully described (using WGS 84 datum) for each site as follows:

Rocky Point - Commencing at a point 1 on the barrier reef with scaled UTM coordinates 413 280 East 2 004 933 North; thence proceeding 0.75 miles east to a point 2, having scaled UTM coordinates 414 484 East 2 004 941 North; thence proceeding 1.69 miles south to a point 3, having scaled UTM coordinates 414 492 East 2 002 244 North; thence proceeding 1.67 miles west to a point 4, having scaled UTM coordinates 411 819 East 2 002 244 North; thence proceeding north 0.75 miles to a point 5, on the barrier reef, having scaled UTM coordinates 411 819 East 2 003 440 North; thence proceeding 0.66 miles in a northeasterly direction on a bearing of 65° (true bearing) to a point 6, on the barrier reef, having scaled UTM coordinates 412 774 East 2 003 882 North; thence proceeding 0.73 miles on a bearing of 26° (true bearing) to the point of origin, and encompassing 2.195 square miles.

Dog Flea Caye, Turneffe Atoll - Commencing on the fore reef at a point 1, and having scaled UTM Coordinates 420 656 East 1 937 720 North; thence proceeding 1.02 miles on a bearing of 90° (true bearing) to a point 2, having scaled UTM coordinates 422 281 East 1 937 717 North; thence proceeding 1.72 miles south to a point 3, having scaled UTM coordinates 422 277 East 1 934 965 North; thence proceeding 1.67 miles west to a point 4, having scaled UTM coordinates 419 605 East 1 934 958 North; thence proceeding 0.29 miles north to a point 5, on the fore reef, having scaled UTM coordinates 419 597 East 1 935 420 North; thence proceeding 0.82 miles on a bearing 39° (true bearing) to a point 6, on the fore reef, having scaled UTM coordinates 420 427 East 1 936 444 North; thence proceeding 0.81 miles on a bearing of 10° (true bearing) to the point of origin, and encompassing 2.20 square miles.

Caye Bokel, Turneffe Atoll - Commencing at point 1, at the steep reef drop-off in southwestern Turneffe Atoll, having scaled UTM coordinates 401 894 East 1 897 817 North; thence proceeding 0.84 miles southeasterly on a bearing of 120° (true bearing) to a point 2, having scaled UTM coordinates 403 049



East 1 897 140; thence proceeding northeasterly 1.00 mile on a bearing of 62° (true bearing) to a point 3, having scaled UTM coordinates 404 458 East 1 897 890 North; thence proceeding south 1.60 miles to a point 4, having scaled UTM coordinates 404 461 East 1 895 326 North; thence proceeding west 1.60 miles to a point 5, having scaled UTM coordinates 401 894 East 1 895 322 North; thence proceeding north 1.56 miles to the point of origin, and encompassing 2.15 square miles.

Sandbore, Lighthouse Reef - Commencing at a point 1, on the fore reef in northern Lighthouse Reef Atoll, and having scaled UTM coordinates 451 192 East 1 930 118 North; thence proceeding east for 1.40 miles to a point 2, having scaled UTM coordinates 453 438 East 1 930 118 North; thence proceeding south for 1.90 miles to a point 3, having scaled UTM coordinates 453 438 East 1 927 071 North; thence proceeding west for 1.01 miles to a point 4, on the fore reef, and having scaled UTM coordinates 451 817 East 1 928 071 North; thence proceeding on a bearing of 5° (true bearing), along the reef, for 0.94 miles along the reef to a point 5, having scaled UTM coordinates 451 954 East 1 928 572 North; thence proceeding on a bearing of 334° (true bearing) for a distance of 1.08 miles along the reef to the point of origin, and encompassing 2.00 square miles.

South Point, Lighthouse Reef Atoll - Commencing at a point 1, on the steep reef drop-off near Southern Lighthouse Reef Atoll, having scaled UTM coordinates 433 229 East 1 894 507 North; thence proceeding 0.82 miles on a bearing of 114° (true bearing) to a point 2, having scaled UTM coordinates 434 429 East 1 893 978 North; thence proceeding 1.68 miles on a bearing of 78° (true bearing) to a point 3, having scaled UTM coordinates 437 055 East 1 894 545 North; thence proceeding 1.05 miles south to a point 4, having scaled UTM coordinates 437 055 East 1 892 863 North; thence proceeding 2.39 miles west to a point 5, having scaled UTM coordinates 433 229 East 1 892 863 North; and thence proceeding 1.03 miles north to the point of origin, and encompassing 2.10 square miles.

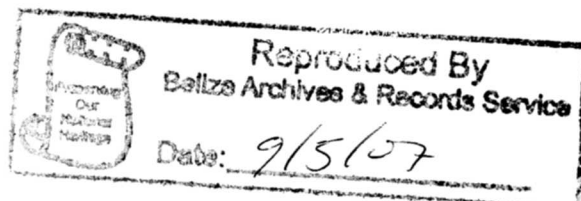
Emily or Caye Glory - Commencing at a point 1, having scaled UTM coordinates 393 586 East 1 890 786 North; thence proceeding 1.52 miles east to a point 2, having scaled UTM coordinates 396 010 East 1 890 782 North; thence proceeding 1.84 miles south to a point 3, having scaled UTM coordinates 396 010 East 1 887 845 North; thence proceeding 0.95 miles west to a

point 4, o
887 837 N
to a point
1 889 14
bearing) 1
586 East
origin, an

Northern
scaled U
east for 1
1 868 816
scaled U
1.75 mile
866 290 N
5, having
proceedi
a point 6
thence pr
of origin.

Gladden
Reserve.
thence p
coordinat
of 139° to
North; th
398 174
scaled U
north, to
North; t
encompa

Rise and
scaled U
east for a
362 914
miles to



a bearing of 62°
4458 East 1 897
, having scaled
roceeding west
894 East 1 895
t of origin, and

the fore reef in
ordinates 451 192
les to a point 2,
North; thence
TM coordinates
1.01 miles to a
s 451 817 East 1
aring), along the
TM coordinates
ng of 334° (true
nt of origin, and

nt 1, on the steep
ng scaled UTM
ng 0.82 miles on
TM coordinates
s on a bearing of
tes 437 055 East
point 4, having
nce proceeding
s 433 229 East 1
e point of origin,

ng scaled UTM
g 1.52 miles east
890 782 North;
ed UTM coordi-
5 miles west to a

point 4, on the barrier reef, having scaled UTM coordinates 394 486 East 1 887 837 North; thence proceeding 0.82 miles on a bearing of 5° (true bearing) to a point 5, on the barrier reef, having UTM scaled coordinates 394 602 East 1 889 141 North; thence proceeding 0.82 miles on a bearing of 309° (true bearing) to a point 6, on the barrier reef, having scaled UTM coordinates 393 586 East 1 889 970 North; thence proceeding 0.51 miles north to the point of origin, and encompassing 2.10 square miles.

Northern Glover's, Glover's Reef Atoll - Commencing at a point 1, having scaled UTM coordinates 426 566 East 1 868 812 North; thence proceeding east for 1.21 miles to a point 2, having scaled UTM coordinates 428 494 East 1 868 816 North; thence proceeding south for 1.58 miles to a point 3, having scaled UTM coordinates 428 494 East 1 866 294 North; thence proceeding 1.75 miles west to a point 4, having scaled UTM coordinates 425 687 East 1 866 290 North; thence proceeding north for a distance of 0.79 miles to a point 5, having scaled UTM coordinates 425 687 East 1 867 557 North; thence proceeding on a bearing of 62° (true bearing) for a distance of 0.56 miles, to a point 6, having scaled UTM coordinates 426 472 East 1 867 974 North; thence proceeding on a bearing of 6° (true bearing) for 0.53 miles to the point of origin, and encompassing 2.78 square miles.

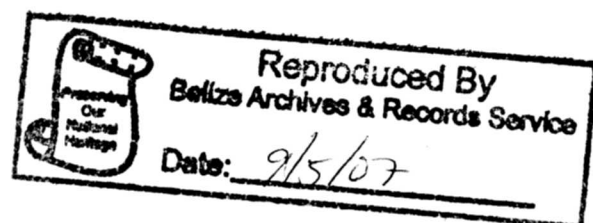
Gladden Spit - Commencing at a point 1, within the Gladden Spit Marine Reserve, having scaled UTM coordinates 396 934 East 1 823 908 North; thence proceeding on a bearing of 45° to a point 2, having scaled UTM coordinates 393 792 East 1 831 767 North; thence proceeding on a bearing of 139° to a point 3, having scaled UTM coordinates 398 189 East 1 826 763 North; thence proceeding south to a point 4; having scaled UTM coordinates 398 174 East 1 824 163 North; thence proceeding west to a point 5, having scaled UTM coordinates 396 052 East 1 824 169 North; thence proceeding north, to a point 6, having scaled UTM coordinates 396 051 East 1 826 392 North; thence proceeding on a bearing of 325° to the point of origin and encompassing 5.61 square miles.

Rise and Fall Bank, Sapodilla Cayes - Commencing at a point 1, having scaled UTM coordinates 358 517 East 1 778 594 North; thence proceeding east for a distance of 2.75 miles to a point 2, having scaled UTM coordinates 362 914 East 1 778 600 North; thence proceeding south for a distance of 2.45 miles to a point 3, having scaled UTM coordinates 362 920 East 1 774 686

North; thence proceeding west for 2.75 miles to a point 4, having scaled UTM coordinates 358 517 East 1 774 686 North; thence proceeding north for 2.44 miles to the point of origin, and encompassing 6.64 square miles.


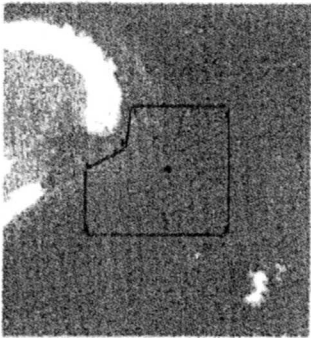
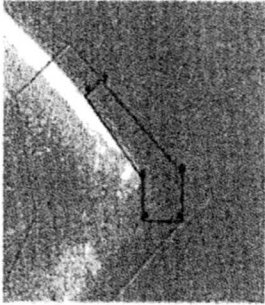
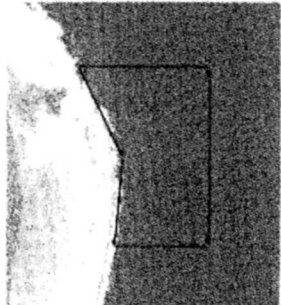
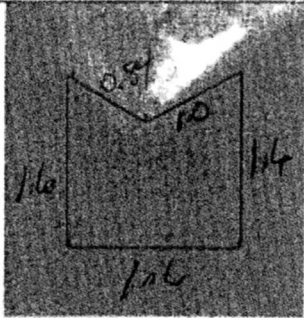
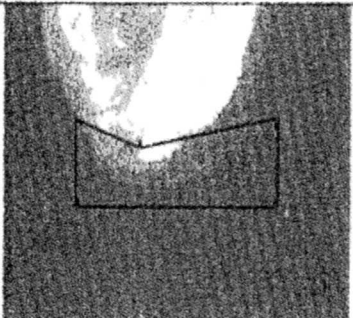
Nicholas Caye, Sapodilla Cayes - Commencing at a point 1, on the fore reef, and having scaled UTM coordinates 365 615 East 1 783 053 North; thence proceeding east for a distance of 1.13 miles to a point 2, having scaled UTM coordinates 367 425 East 1 783 038 North; thence proceeding south for a distance of 1.75 miles to a point 3, having scaled UTM coordinates 367 430 East 1 780 245 North; thence proceeding on a bearing of 271° (true bearing) for a distance of 2.15 miles to a point 4, on the east side of Lime Caye, having scaled UTM coordinates 363 984 East 1 780 313 North; thence proceeding on a bearing of 42° (true bearing) for a distance of 1.18 miles to a point 5, having scaled UTM coordinates 365 245 East 1 781 729 North; thence proceeding on a bearing of 16° (true bearing) for a distance of 0.86 miles to the point of origin, and encompassing 2.60 square miles.

Seal Caye, Sapodilla Cayes - Commencing at a point 355 111 East 1 789 940 North; thence proceeding 1.24 miles east to a point 2, having scaled UTM coordinates 357 100 East 1 789 940 North; thence proceeding south for a distance of 2.04 miles to a point 3, having scaled UTM coordinates 357 100 East 1 786 683 North; thence proceeding west for a distance of 1.24 miles to a point 4, having scaled UTM coordinates 355 111 East 1 786 683 North; thence proceeding north for 2.04 miles to the point of origin, and encompassing 2.50 square miles.



SCHEDULE 2

Site maps made using goereferenced Landsat TM imagery as base maps, and indicating the scaled UTM coordinates as indicated in Schedule 1, above.

| | |
|---|---|
|  <p data-bbox="509 849 818 879">Rocky Point, Ambergris Caye</p> |  <p data-bbox="1024 849 1268 879">Northern Glover's Reef</p> |
|  <p data-bbox="597 1241 732 1272">Gladden Spit</p> |  <p data-bbox="976 1248 1312 1278">Sandbore, Lighthouse Reef Atoll</p> |
|  <p data-bbox="483 1647 837 1677">Caye Bokel, Turneffe Islands Atoll</p> |  <p data-bbox="959 1651 1321 1681">South Point, Lighthouse Reef Atoll</p> |

graph 2 above, are
may be seen at the
eries Department,

paragraph 2 shall
protect important

h(1) shall be zoned
reas listed above in
ine reserves, but not
vation zone, may be
oare designated by,
o-managers of the
ype and quantity of
Fisheries Adminis-
dingly.

ese areas shall be
scribed by the terms

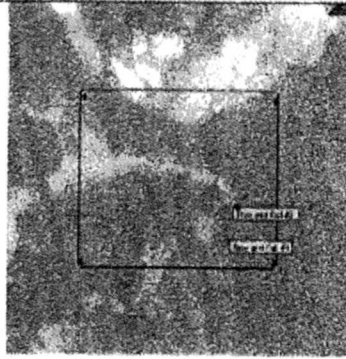
n annual basis, and
monitoring results

on the 21st day of

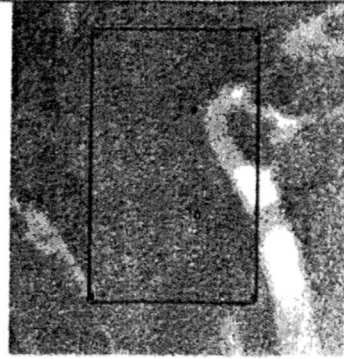
Fisheries and Co-

Bay
ULO BAEZA
- of Agriculture,
d Fisheries

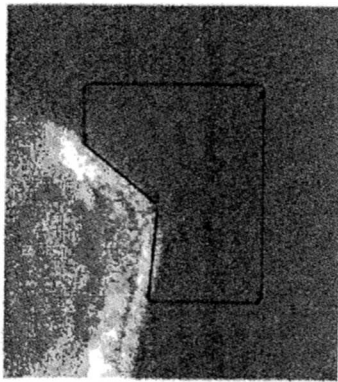




Rise and Fall Bank, Sapodilla Cayes



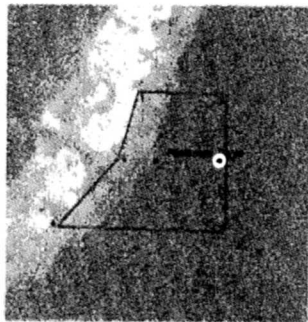
Seal Caye, Sapodilla Cayes



Emily or Caye Glory



Dog Flea, Turneffe Islands Atoll



Nicholas Caye, Sapodilla Cayes

Reproduced By
Belize Archives & Records Service
Date: 9/5/07

