

BELIZE:

STATUTORY INSTRUMENT

No. 162 of 2003

ORDER made by the Minister of Agriculture and Fisheries in exercise of the powers conferred upon him by section 13 (1) of the Fisheries Act, Chapter 210 of the Substantive Laws of Belize, Revised Edition 2000, and all other powers thereunto him enabling.

(Gazetted 1st November, 2003.)

1. These Regulations may be cited as the

FISHERIES (NASSAU GROUPEL PROTECTION) REGULATIONS, 2003.

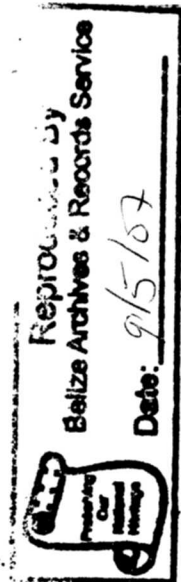
2. (1) No person shall take in the waters of Belize, or buy, sell or have in his possession any Nassau grouper (*Epinephelus striatus*) between the 1st December, 2003, and the 31st March in the following year, except for Nassau grouper taken from the sites of Maugre Caye at Turneffe Islands and Northern Two Caye at Lighthouse Reef, descriptions of which are provided in Schedule 1, with accompanying maps in Schedule 2.

(2) A special licence may be granted by the Fisheries Administrator to any person engaged in traditional fishing in the two sites, referred to in sub-paragraph (2), during the closed season.

(3) Every catch of Nassau grouper taken from the sites, referred to in sub-paragraph (2), during the closed season shall be verified by a Fisheries Officer.

Short title:

Prohibition.



(4) Any person who contravenes sub-paragraph (1) is liable on summary conviction to a fine not exceeding five hundred dollars or to imprisonment for a period not exceeding six months, or to both such fine and imprisonment.

MADE by the Minister of Agriculture, Fisheries and Cooperatives this 21 day of October, 2003.

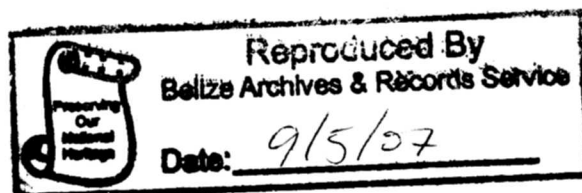

(SERVULO BAEZA)
*Minister of Agriculture,
and Fisheries*

ALL T
descri

Maug
coord
distan
East 1
a poin
thence
UTM
bearir
coord
of 27:
coord
distan

North
scale
east f
4509
miles
thenc
4, hav
proce
scale
north

Printed in Belize by the Government Printer



Paragraph (1) is exceeding five and not exceeding ment.

Fisheries and Co-

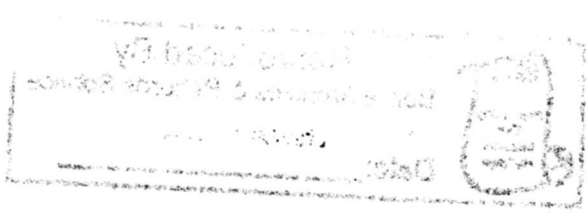
7
Baeza
Agriculture,
Fisheries

SCHEDULE 1

ALL THAT PORTION of the Caribbean Sea, reefs and cayes and more fully described (using WGS 84 datum) for each site as follows:

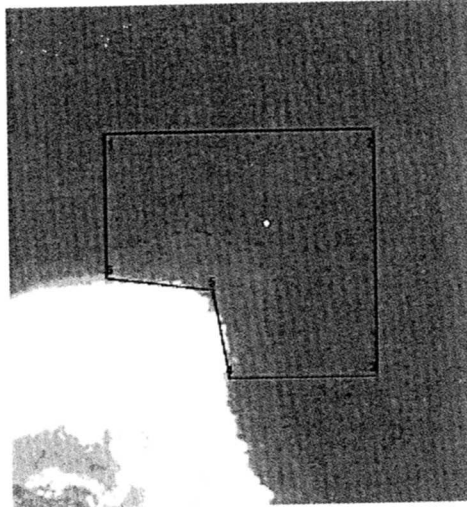
Maugre Caye, Turneffe Atoll: Commencing at a point 1 with scaled UTM coordinates 418 701 East 1 950 997 North; thence proceeding east for a distance of 1.99 miles to a point 2, having scaled UTM coordinates 421 890 East 1 950 997 North; thence proceeding south for a distance of 1.82 miles to a point 3, having scaled UTM coordinates 421 885 East 1 948 085 North; thence proceeding west for a distance of 1.09 miles to a point 4, having scaled UTM coordinates 420 145 East 1 948 085 North; thence proceeding on a bearing of 350° for a distance of 0.66 miles to a point 5, having scaled UTM coordinates 419 957 East 1 949 124 North; thence proceeding on a bearing of 278° for a distance of 0.79 miles, to a point 6, having scaled UTM coordinates 418 705 East 1 949 291 North; thence proceeding north for a distance of 1.07 miles to the point of origin.

Northern Two Cayes, Lighthouse Reef: Commencing at a point 1, having scaled UTM coordinates 448 895 East 1 933 422 North; thence proceeding east for a distance of 1.30 miles to a point 2, having scaled UTM coordinates 450 968 East 1 933 422 North; thence proceeding south for a distance of 1.63 miles to a point 3, having scaled UTM coordinates 450 968 East 1 930 819; thence proceeding on a bearing of 312° for a distance of 1.08 miles to a point 4, having scaled UTM coordinates 449 673 East 1 931 965 North; thence proceeding on a bearing of 271° for a distance of 0.49 miles to a point 5, having scaled UTM coordinates 448 896 East 1 931 978 North; thence proceeding north for a distance of 0.90 miles to the point of origin.

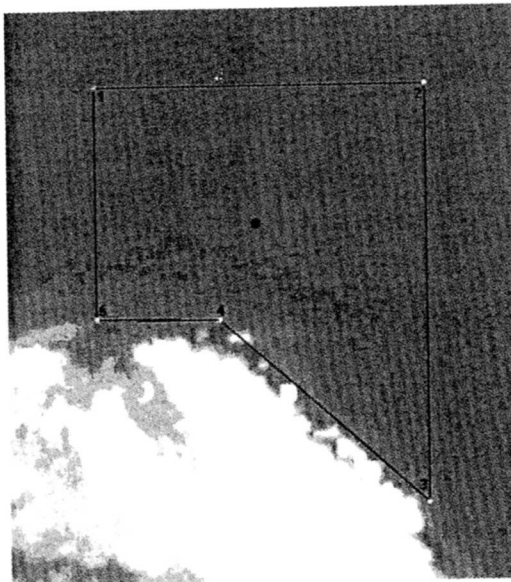


SCHEDULE 2

SITE MAPS



Maugre Caye, Turneffe Islands Atoll



Northern Two Cayes, Lighthouse Reef Atoll

Preserved By
 Belize Archives & Records Service
 Date: 9/15/07